

NIH NATIONAL CANCER INSTITUTE



## Dionna M. Gamble, PhD

Postdoctoral Fellow  
CCR Bethesda



### Education

Ph.D., Genetics and Genomics, Duke University

B.S., Biological Studies, University of Maryland Baltimore County

### Scientific Interests

- Genome instability
- Cancer genetics/genomics
- Next gen sequencing technologies
- DNA damage/repair
- Translational research
- Therapeutic development

### I applied to iCURE because...

I applied to the iCURE program because the NCI has a robust research environment where I could transition into more translational research around cancer, and this program celebrates/supports underrepresented minority scientists. I also like that iCURE has an emphasis on mentoring, building your network, and professional development.

### My favorite traditions/holidays...

Christmas is my favorite holiday because my family comes together on Christmas Eve to hang out, eat good food, play games, and exchange gifts. It's a time I get to see extended family I don't see on a regular basis, including those that live out of town.

### My hometown is...

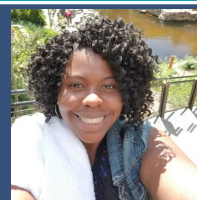
Upper Marlboro, MD (Prince George's County)

### In my spare time, I enjoy...

- Dancing
- Cooking
- Traveling and eating at local spots
- Spending time with friends and family

### A few of my favorite things...

- Seafood (crabs, shrimp, etc.)
- Music and watching documentaries about different artists
- TV show: The Office



NIH NATIONAL CANCER INSTITUTE



## W. Marston Linehan, MD

Chief, Urologic Oncology Branch  
Senior Investigator  
CCR Bethesda



### Words to live by...

*You shouldn't be surprised by the progress people can make if they are not quite so concerned about who gets the credit for the work.*

### What is your favorite thing about working at NCI?

The opportunity to work with such outstanding colleagues

### In my spare time, I enjoy...

I like to bicycle with my wife.

### My favorite traditions/holidays...

My favorite holiday is Thanksgiving. Everyone takes off on Thanksgiving and families get together.

